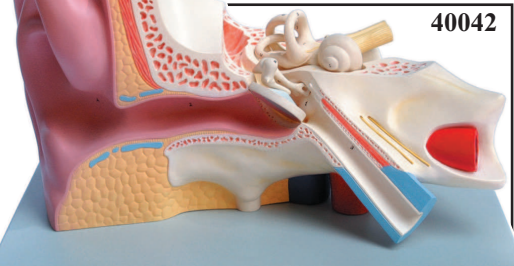


Eardrum with malleus, incus and stapes are removable

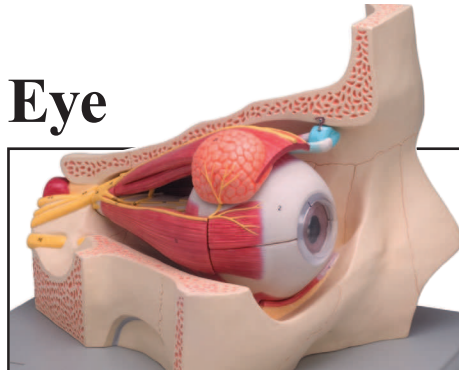
**Ear Eye**

40042



Cochlea and labyrinth with vestibular and cochlear nerves are removable

GIMA code	Ear sizes	Kg	Parts	Mag
40040	16x11x10 cm	0.2	3	1X
40042	33x23x21 cm	2	5	3X



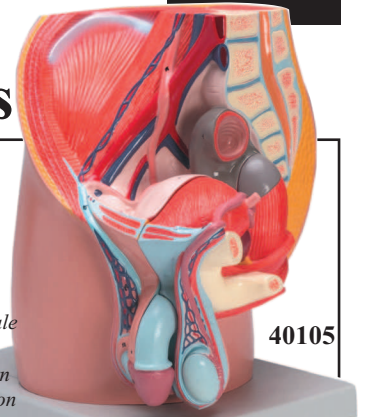
Models show the eye ball with optic nerves and muscles in its natural position in the bony orbit

40031-40033

GIMA code	Eye with orbit sizes	Kg	Parts	Mag
40031	42x30x31 cm	3.2	4	5X
40033	42x30x31 cm	3.4	11	5X

**Pelvis**

Half penis divided into medial and transverse sections, and half of the male reproductive system with an open dissection of a testis are removable

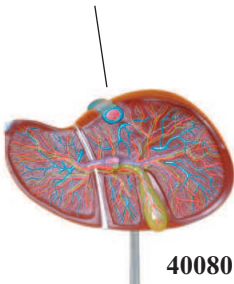


40105

GIMA code	Pelvis size	Sex	Kg	Parts	Mag
40100	25x16x27	fem	1.3	3	1X
40105	25x18x27	male	1.5	4	1X

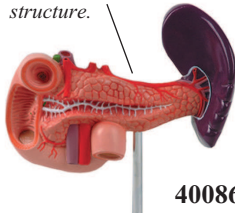
**Digestive and Urinary Systems**

This model shows a liver that is dissected to expose the internal distribution of arteries and veins, the portal vein and the bile duct.



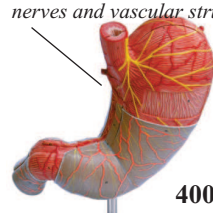
40080

This life size model is an accurate representation of the pancreas, spleen and duodenum. The pancreas is open to show the entire pancreatic duct. The duodenum is partially dissected to expose its internal structure.



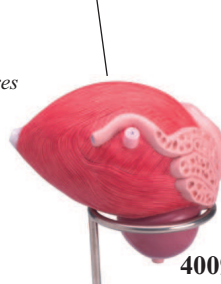
40086

Can be opened to show the internal structure of the stomach, including the mucosa, the pylorus, and a section of the gastric wall. Superficial dissection exposes the longitudinal, circular and oblique muscle layers, with nerves and vascular structures



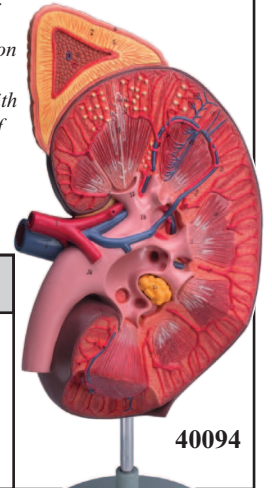
40088

Shows the male urinary bladder with the prostate gland surrounding the urethra



40090

The kidney is shown with the renal capsule. Additional structures include: the cortex, medulla, pyramids with papillae, partially dissected renal pelvis, renal calices, ureter, blood vessels, suprarenal gland with cortex and medulla. A schematic representation of the renal corpuscle with the system of collecting tubules is included

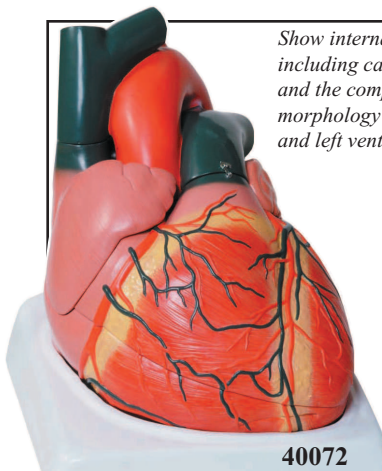


40094

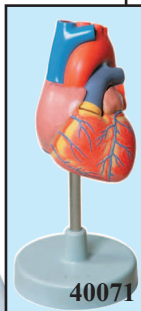
GIMA code	Products - all supplied with table stand	Size	Weight	Parts	Magnif.
40080	LIVER	15x26x12 cm	1 kg	1	1.5X
40086	PANCREAS, DUODENUM AND SPLEEN	16x15x23 cm	0.350 kg	1	1X
40088	STOMACH	16x14.5x5 cm	0.235 kg	2	1.5X
40090	MALE URINARY BLADDER WITH PROSTATE	27x20x15 cm	1.2 kg	1	3X
40094	KIDNEY WITH ADRENAL GLAND+RENAL CORPUSCLE	40x15x8 cm	1.2 kg	1	3X

**Heart**

Show internal structures including cardiac valves and the comparative morphology of the right and left ventricles



40072



40071

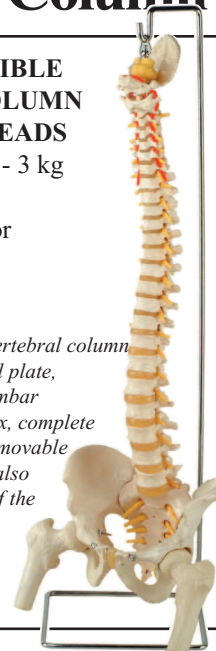
GIMA code	Heart sizes	Kg	Parts	Mag
40071	11x7.5x9.5 cm	0.23	2	1X
40072	24x25x28 cm	2.9	4	3X

**Vertebral Column**

Code 40130 FLEXIBLE VERTEBRAL COLUMN WITH FEMUR HEADS  
Size: 95x20x20 cm - 3 kg

life size - mounted on stand for hanging

A fully flexible life size vertebral column consisting of the occipital plate, cervical, thoracic and lumbar vertebrae, sacrum, coccyx, complete pelvis with symphysis, removable femur heads. The model also features representation of the vertebral arteries, spinal nerve branches, and a prolapsed L3-L4 intervertebral disc.



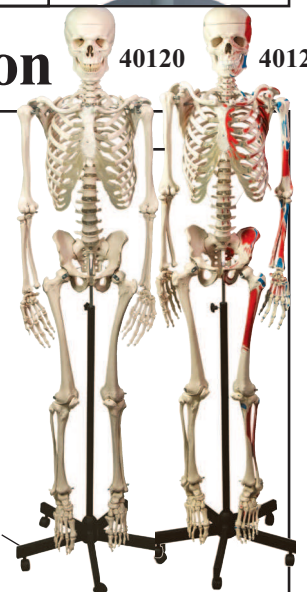
**Skeleton**

Main joints are articulated, upper and lower limbs can be removed

The left side of the skeleton (code 40125 only) shows the point of origin (red) and the point of insertion (blue) of the muscles.

Supplied with 5-caster roller stand and plastic dust cover.

Code 40120 HUMAN SKELETON  
Code 40125 MUSCULAR SKELETON  
Height: 170 cm Weight: approx 10 kg.



40120

40125